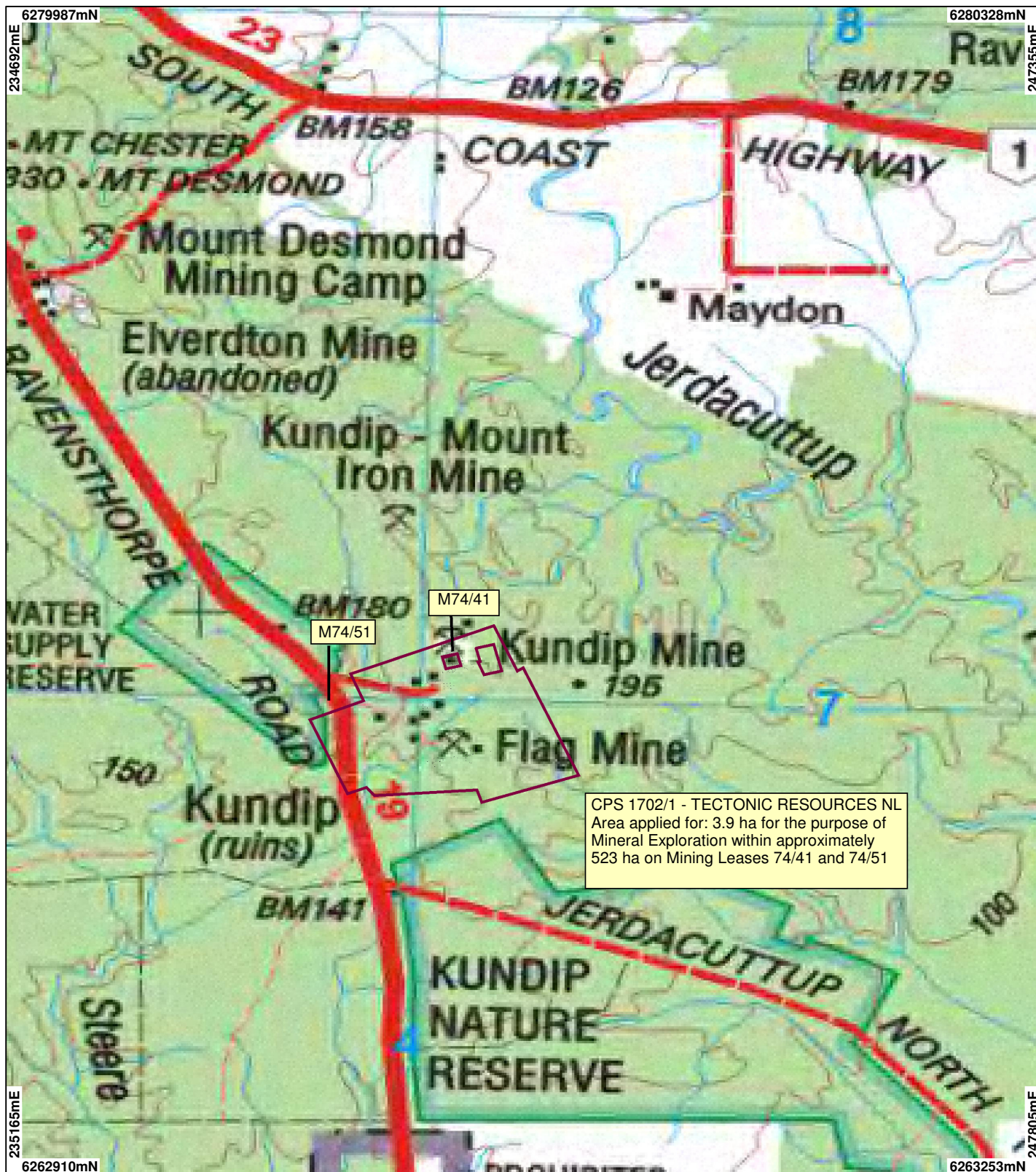


CPS 1702/1 - TECTONIC RESOURCES NL



CPS 1702/1 - TECTONIC RESOURCES NL
 Area applied for: 3.9 ha for the purpose of Mineral Exploration within approximately 523 ha on Mining Leases 74/41 and 74/51

LEGEND

Clearing instruments

- Areas Applied to Clear
- Areas Subject to Conditions
- Areas Approved to Clear
- Ravensthorpe 1.4m Orthomosaic - DLI 02

- Mining tenements - DJIR_1 NATMAP 250K Series Mapping - GA 08/03



0 ~2 km

Scale 1:75000
 (Approximate when reproduced at A4)

Geocentric Datum Australia 1994

Note: the data in this map have not been projected. This may result in geometric distortion or measurement inaccuracies.

..... Date

Officer with delegated authority under Section 20 of the Environmental Protection Act 1986

Information derived from this map should be confirmed with the data custodian acknowledged by the agency acronym in the legend.



WA Crown Copyright 2002

* Project Data. This data has not been quality assured. Please contact map author for details.